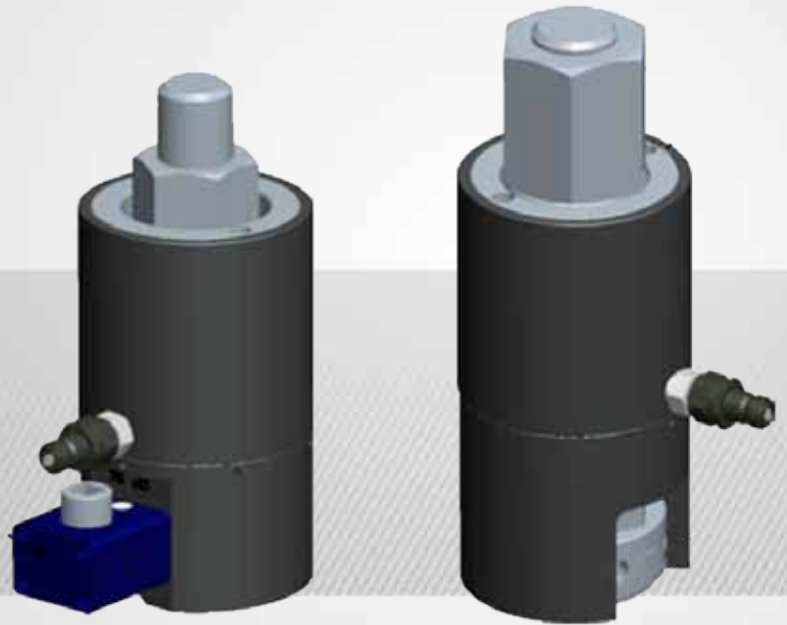




SUPERIOR BOLTING SOLUTIONS®

WINDMASTER™ WILLIAMS REBAR TENSIONER M36 GR150, M32 GR150, #11 GR90, #11 GR75, #10 GR75

NEW TECHNOLOGY

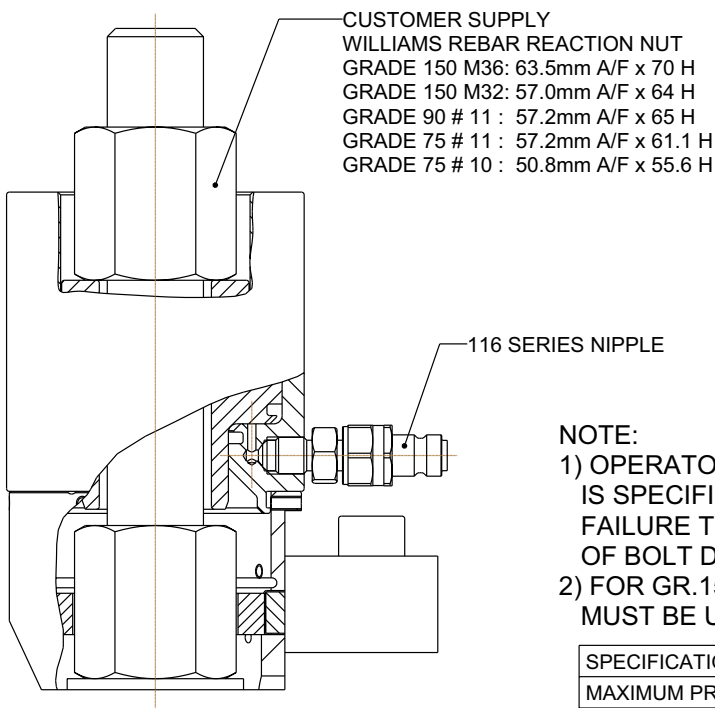


SUPERIOR BOLTING SOLUTIONS®

WINDMASTER™

WILLIAMS REBAR TENSIONER

M36 GR150, M32 GR150, #11 GR90, #11 GR75, #10 GR75



FEATURES:
 FAST SPRING PISTON RETURN
 GEAR DRIVEN NUT RUNDOWN (OPTIONAL)
 POSITIVE PISTON STOP
 INTERCHANGABLE SOCKET PIECE
 QUICK BRIDGE DISCONNECT

NOTE:

- 1) OPERATOR MUST ENSURE CORRECT OPERATING PRESSURE IS SPECIFIED FOR THE GRADE/THREADFORM UTILIZED. FAILURE TO COMPLY MAY RESULT IN TENSILE FAILURE OF BOLT DURING OPERATION!
- 2) FOR GR.150 M36 THREADFORM SPACER PIECE (SUPPLIED) MUST BE USED BETWEEN REACTION NUT AND TOOL

SPECIFICATION				
MAXIMUM PRESSURE	1500	bar	21750	psi
HYDRAULIC PRESSURE AREA	4357	mm ²	6.75	in ²
MAXIMUM LOAD	653	kN	147	kips
MAXIMUM STROKE	16	mm	5/8	in
APPROX. WEIGHT	7.5	kg	16.5	lb

REBAR GRADE/THREADFORM	GR.75 #10	GR.75 #11	GR.90 #11	GR.150 M32	GR.150 M36
YIELD LOAD OF BOLT/kN (kips)	423.9 (95.3)	520.5 (117)	624 (140)	667.2 (150)	843.4 (190)
HYDRAULIC PRESSURE @ YIELD/bar (psi)	973 (14110)	1195 (17325)	1432 (20770)	1500 (21750)	-
MIN STUD PROTRUSION 'A'/mm (in)	209.2 (8.24)	221.7 (8.73)	225.6 (8.88)	224.6 (8.84)	274.6 (10.8)
TOOL HEIGHT 'B'/mm (in)	180.6 (7.11)	192.6 (7.58)	192.6 (7.58)	192.6 (7.58)	204.6 (8.06)
BRIDGE HEIGHT 'C'/mm (in)	72 (2.83)	84 (3.31)	84 (3.31)	84 (3.31)	96 (3.78)